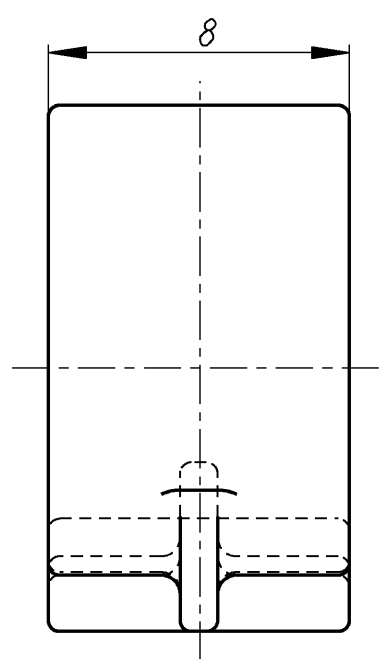
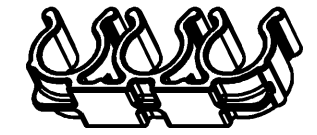


Ansicht / View X





* Masse sind bei eingedrucktem Pruefstift $\varnothing 7,6$ zu messen
 Dimensions must be measured with preassembled gauge plug $\varnothing 7,6$



1:1

passend fuer Rohr - oder Schlauch - $\varnothing 8$
 applicable for pipe - or hose - diameter 8

A		nove cislovani SAP, nový rameček new SAP numbering, new drawing frame	24.03.06	Sd
Ind.	kolikrát / how often	Popis / Description	Datum / Date	Name
Zmeny / Modifications				
CAD - PE - 175000_001		Format: DIN A3		
				
SPECIALNI UPINACI SYSTEMY				
<small>This drawing and all information (the "Drawing") disclosed are the exclusive property of A. Raymond. By using this Drawing the Addressee acknowledges and accepts that this Drawing (1) is covered by A. Raymond's intellectual property rights or know-how and (2) is provided under the following conditions who represent a Deposit Agreement. This Drawing is for Addressee's internal use only limited to its estimation. Without prior written consent of A. Raymond, no permission or rights for any purpose, is hereby granted, such as, without any limitation, (1) the copy, in part or entirely (2) and/or the presentation, in part or entirely, to any other third party outside the Addressee's company or in the company but with no interest (3) and/or the distribution of the Drawing, in part or entirely, in any medium (4) and/or the creation of any derivative work. In case of breach of these conditions, Addressee shall indemnify A. Raymond from and against all damages (compensatory or consequential), costs, expenses and charges, caused or arising out of or attributable to its willful misconduct, fraud, negligence, infringement of A. Raymond's Intellectual Property rights. If the Addressee does not accept these conditions, please notify A. Raymond's sender immediately. Jestliže máte problém s porozuměním tohoto textu, pak před zahájením práce na tomto projektu kontaktujte odesílatele výkresu za účelem získání vám stromilečného překladu.</small>		Datum / Date	27.09.99	
Patentova prava / Patent rights vorbehalten / all rights reserved		Kreslil / Drawn	Sasek	
Meritka / Scale 5:1		C.-prezk. / App.	ECTDF50811AA7603	
Vseobecne jinak neurcena tolerance / General tol. unless otherwise specified ±0.5 / ± 5°		F.-prezk. / App.		
Uprava materialu / Material treatment		G.-prezk. / App.		
Material POM - C - Standard		S.-prezk. / Patent app.		
Nazev dilu / Partname Schlauchhalter hose - clip		Nahrada za / Substitute for 175 000.691	Hmot. / Weight [g]	
Cis.dilu zakaznika / Customer part No.				
175 000.001		Cislo dilu / Part-No. 175 000.001		
5003		C		
7000				
cerna/black				
Cislo dilu / Part-No.		Kod mat. / Mat. code		
Kod barvy / Colour code		Barva / Colour		