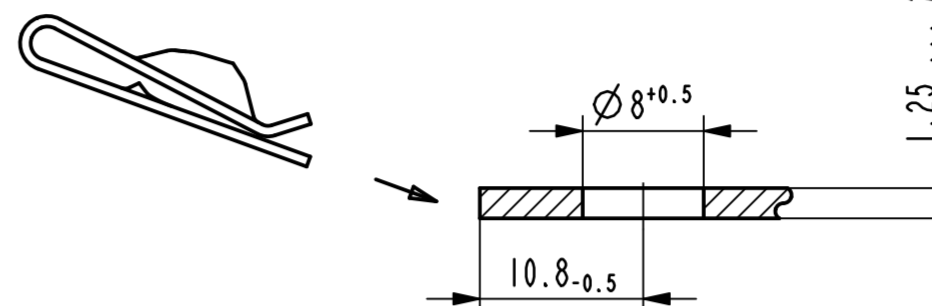
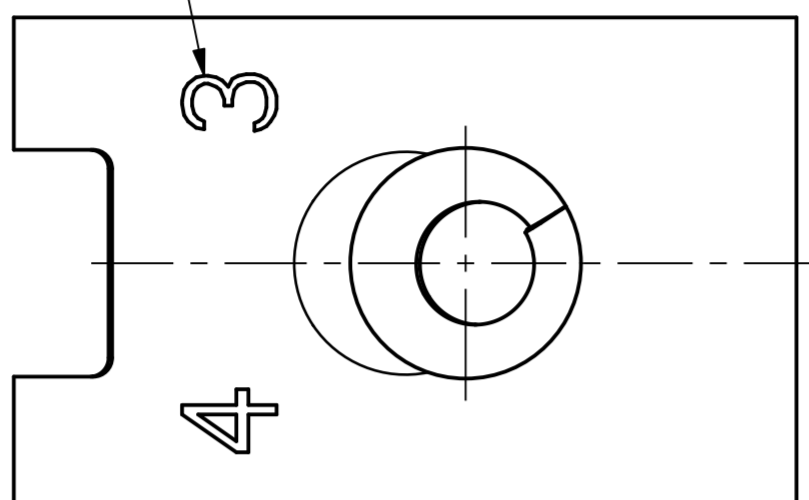
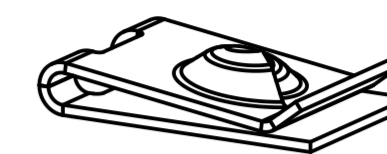


Vor Auslegung einer automatisierten Verarbeitung des Teils sollte Rücksprache mit Fa. ARAYmond gehalten werden.
Fully automatic processing of the part requires prior consultation with ARAYmond.

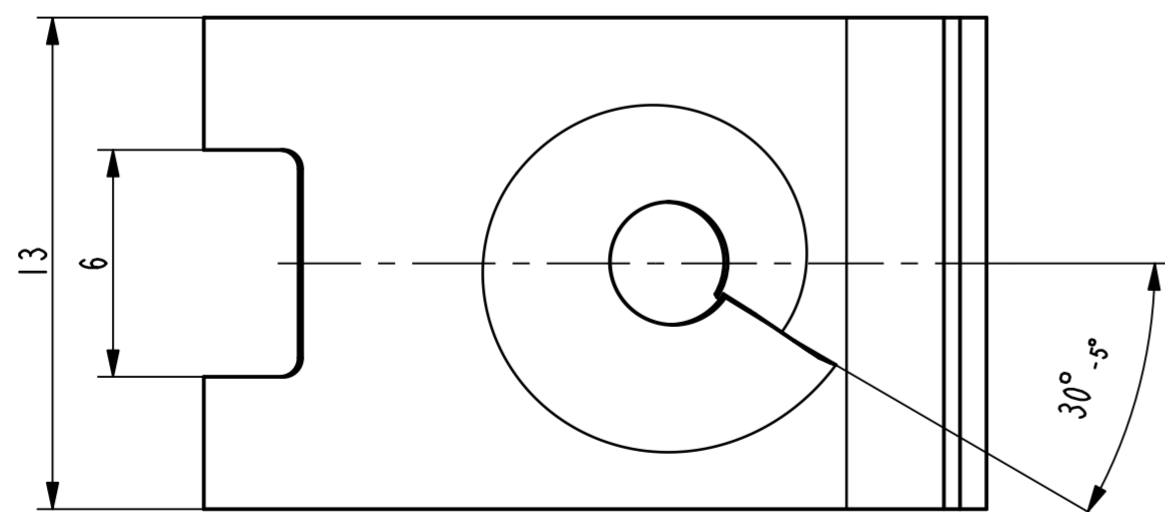
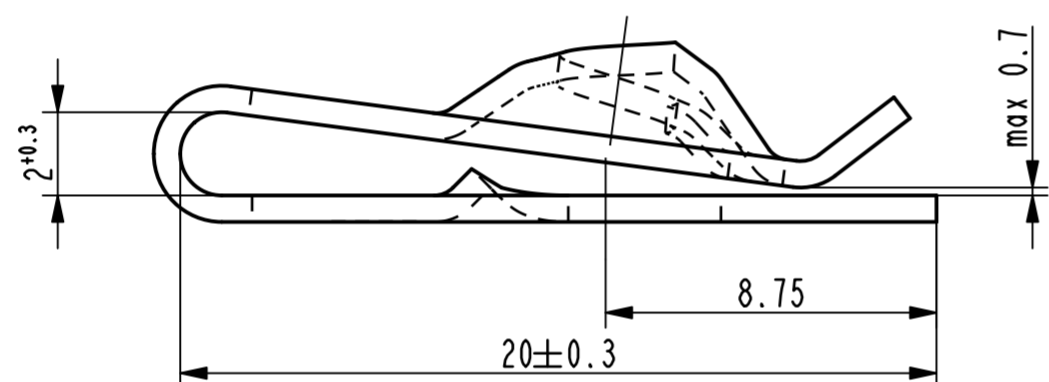
Kennzeichnung zulaessig / marking permissible



Einbausituation / assembly situation
2:1



Isometrische Ansicht / isometric view
2:1



Ab		Zeichnung ueberarbeitet nach AR-Gruppenstandard, Teil unveraendert	29.10.13	mj
----	--	--	----------	----

Rev.	Anzahl/quantity	Aenderungsbeschreibung / modification description	Datum/date	Name
------	-----------------	---	------------	------

ARAYmond
A RAYMOND GmbH & Co.KG

Teichstrasse 57
Germany - 79511 Loerrach
Phone +49 (0) 7621 174-0
Fax +49 (0) 7621 174-225

Bei Verstaeandisproblemen beantragen Sie bitte beim Absender die deutsche Fassung vor jeder Anwendung.

"CONDITIONS OF USE"
This drawing and all information the "Drawing" disclosed are the exclusive property of ARAYmond.
By using this Drawing the Addressee acknowledge and accept that this Drawing (1) is covered by ARAYmond' intellectual property rights or know-how and (2) is provided under the following conditions who represent a Deposit Agreement. This Drawing is for Addressee' internal use only limited to its estimation. Without prior written consent of ARAYmond, no permission or rights for any purpose, is hereby granted, such as, without any limitation, (1) the copy, in part or entirely, (2) and/or the presentation, in part or entirely, to any other third party outside the Addressee' company or in the company but with no interest (3) and/or the distribution of the Drawing, in part or entirely, in any medium (4) and/or the creation of any derivative work. In case of breach of these conditions, Addressee shall indemnify ARAYmond from and against all damages (compensatory or consequential), costs, expenses and charges, caused or arising out of or attributable to its willful misconduct, fraud, negligence, infringement of ARAYmond' intellectual property rights. If the Addressee does not accept these conditions, please notify ARAYmond' sender immediately.

Intellectual property rights	vorbehalten / all rights reserved		Classification code	AABAD
Ersatz fuer/substitute for	215635.C.01/Aa/13.10.2009	Entw.Ref./dev.ref.	Projekt-Nr./project no.	68097
Masstab/scale	5:1	Allgemeintoleranz/general tolerance	Datum/date	29.10.2013
Format	A2	Erstellt von/prepared by	Freigegeben/approved	M. Junge
Projektion/projection	First angle projection	ALL DIMENSIONS ARE IN MILLIMETERS	Freigegeben/approved	20131031063801
Blechkoeche/met. thickness DIN EN 10140	0.70	Volumen/volume (mm ³)	339.9	Gewicht/weight (g) 2.7

Oberfl./finish: verzinkt / passiviert farblos / zinc plated / passivated colourless
Oberfl. Code/finish code: 3250

Werkstoffbehandl./material treatment: zwischenstufenverguetet / austempered / 375 ... 475 HV 5

Werkstoff/material: C67S DIN EN 10132-4
Mat. code: 1000

Bezeichnung/title: Blechmutter fuer Gewinde EN ISO 1478-ST4.2 & 4.3 / sheet metal nut for thread EN ISO 1478-ST4.2 & 4.3

Teil-Nr./part no.: 215635-0-01
Drawing type: C:Customer

Kuendenteile-Nr./customer part no.: -
Blatt / sheet: 1 / 1

CAD system & version: ProE WF4
Dateiname / filename: 215635-0C00

Teil-Nr. / part no.	Oberflaeche / Farbe / finish / colour	Oberfl. Code / finish code
	Ausfuhrung / Execution	

