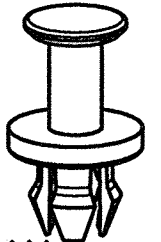


Kennzeichnung: / Identification:  
 Hersteller - Code VW 105 40 - RAY  
 Mfr. - Code  
 Werkstoff - Code VDA 260 >PA6 GF15 <  
 Material - Code

3D-Darstellung 1:1

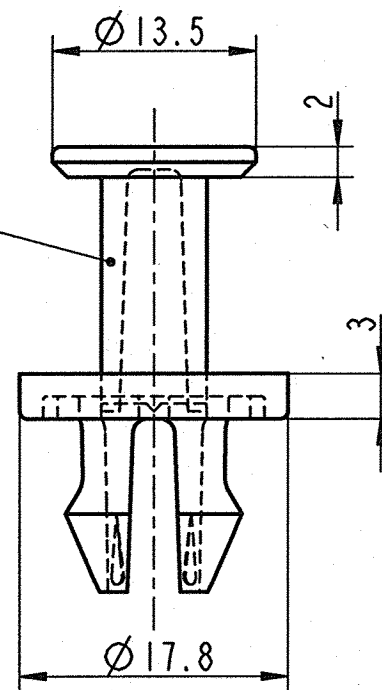
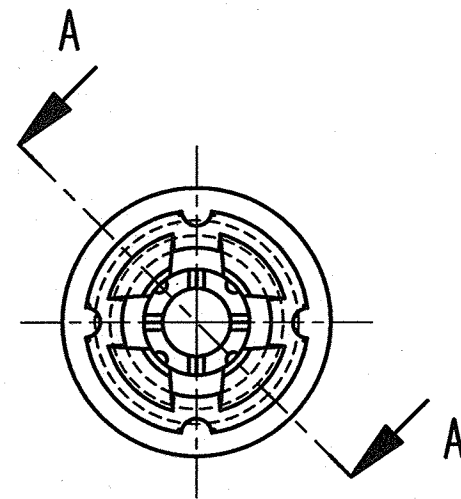
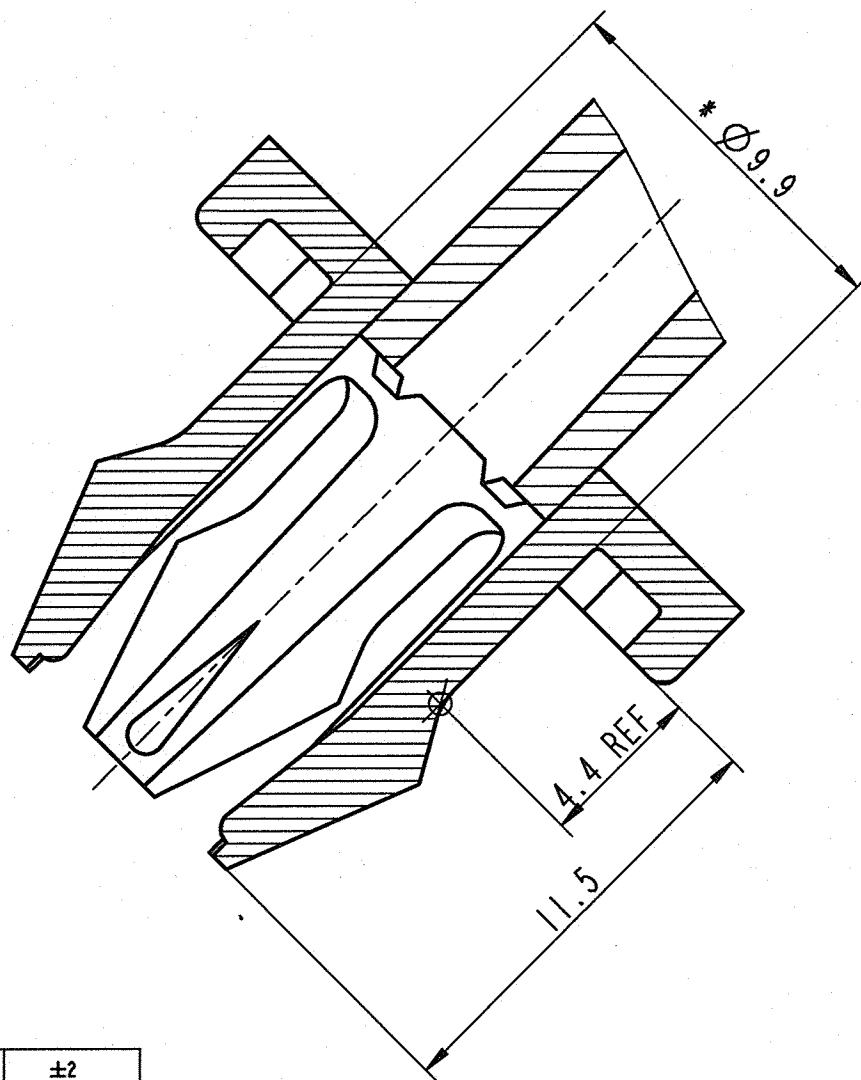


Befest. - Loch =  $\varnothing 10 \pm 0.1$   
 Fastening hole

(2x) 020074 000 montiert mit 020073 000  
 = ZSB 082373 000

-	-	-	-	-
-	-	-	-	-
-	-	-	-	-
-	-	-	-	-
-	-	-	-	-
Aa	-	Indexreform/SAP - keine Teileänderung	18.03.08	Sp Sp
Ind.	kommt vor/ how often	Beschreibung / Description	Datum/Date	Name

Schnitt / section A-A  
 M 5:1



Stift vormontiert  
 pin preassembled

REF = Theoretische Maße,  
 dienen nur der Werkzeugherstellung /  
 theoretical dimensions are only  
 used for the tool production

endgültige Toleranzfestlegung  
 nach Erprobung der Serienteile  
 final definition of tolerances  
 after testing the serial parts

>400 <= 1000	±2
>120 <= 400	±1.5
> 30 <= 120	±1
> 6 <= 30	±0.5
<= 6	±0.25
Winkel / Angle	±3°

Allgemeintoleranzen fuer  
 Nenmasse ohne Toleranz.  
 General tolerances for  
 nominal dimensions without  
 specified tolerance.

\* an Anbindung gemessen



020074 000	schwarz black	SW	7000
Teil-Nr. / Part-No.	Oberflaeche / Farbe / Finish / colour	Kennzahl / Code number	Ausfuehrung / Execution

Aenderungen / Modifications

Format DIN A3

Bei Verstaendnisproblemen beantragen Sie bitte beim Absender die deutsche Fassung vor jeder Anwendung.  
 "CONDITIONS OF USE"  
 This drawing and all information (the "Drawing") disclosed are the exclusive property of A.Raymond. By using this Drawing the Addressee acknowledge and accept that this Drawing (1) is covered by A.Raymond' intellectual property rights or know-how and (2) is provided under the following conditions who represent a Deposit Agreement. This Drawing is for Addressee' internal use only limited to its estimation. Without prior written consent of A.Raymond, no permission or rights for any purpose, is hereby granted, such as, without any limitation, (1) the copy, in part or entirely (2) and/or the presentation, in part or entirely, to any other third party outside the Addressee' company or in the company but with no interest (3) and/or the distribution of the Drawing, in part or entirely, in any medium (4) and/or the creation of any derivative work. In case of breach of these conditions, Addressee shall indemnify A.Raymond from and against all damages (compensatory or consequential), costs, expenses and charges, caused or arising out of or attributable to its willful misconduct, fraud, negligence, infringement of A.Raymond' intellectual property rights. If the Addressee does not accept these conditions, please notify A.Raymond' sender immediately.

Dateiname/ Filename	CAD-PE: 020074_C_01				
Ersatz fuer/ Substitute for	20 074.530 Index I vom 13.08.2002	Proj.-Nr./ Proj.-No.	31079-K	RASCH- Code	CAF--
		Vol.(mm³)	1415	Gewicht/ Weight (g)	1.74

Schutzrechte/ Patent rights	vorbehalten / all rights reserved				
Gepr./ App.	F.-gepr./ Produktion	Q.-gepr./ Quality	S.-gepr./ Patent app.		
Masstab / Scale	Allgem.Tol. wenn nicht anders angegeben/ General tol. unless otherwise specified	Datum/ Date	18.03.2008	Gez./ Drawn	Schnurpfeil Sp
	2:1	siehe Tabelle / see table			

Oberflaechenbehandlg./ Finish	-	Kennzahl/ Code number	
----------------------------------	---	--------------------------	--

Werkstoffbehandlg./ Material treatment		Bleedicke/ Mat.Thickn. DIN EN 10 140	
---	--	--	--

Werkstoff/ Material	PA 6 GF15, wärmostabil	Mat.-Code	1530
------------------------	------------------------	-----------	------

Benennung/  
 Partname  
**Spreizniet**  
 demontierbar

Teil-Nr./ Part-No.	020074 000	C
	für ZSB-VW-Nr. 7L0 919 288	