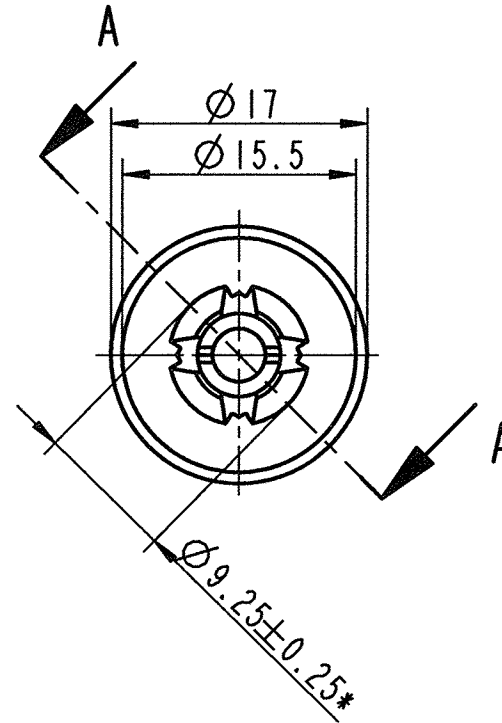
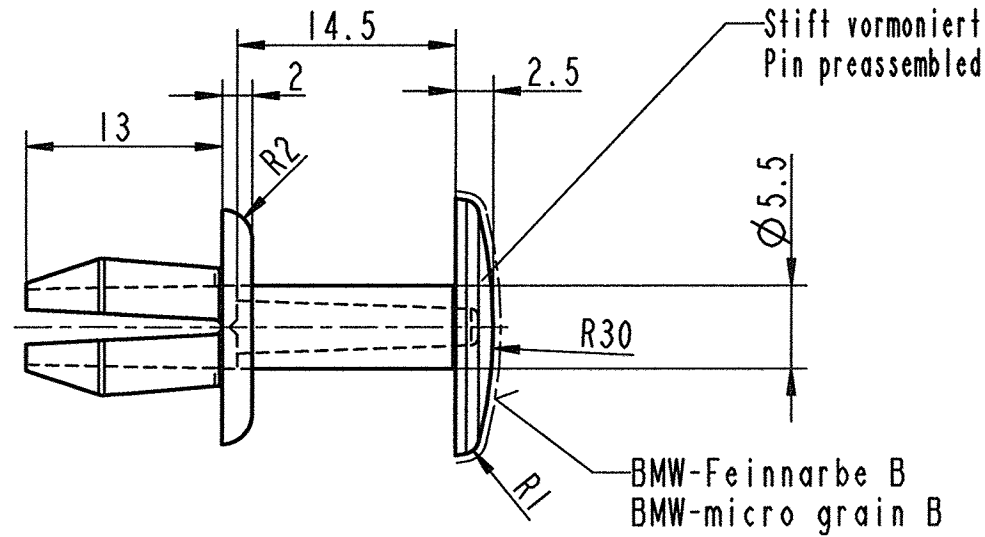
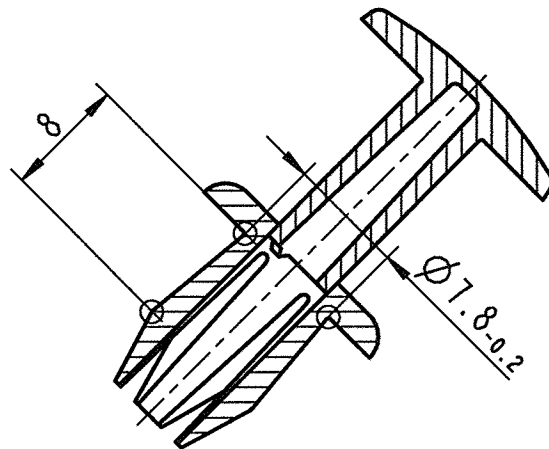


Kennzeichnung: / Identification:

Werkstoff - Code VDA 260 >PA 66<  
Material - Code

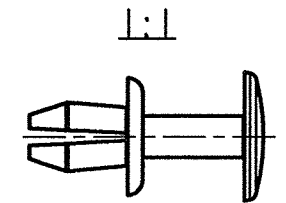


Schnitt / section A-A



\*Maß sind bei eingedrucktem Pruefstift Ø5.5 zu messen  
Dimension must be measured with preassembled test pin Ø5.5

Bef.-Loch fastening hole Ø	Bef.-Dicke fastening thickness s
7.8	0.8 - 4.2
8.3	2.4 - 6
8.8	6 - 7



Ind.	kommt vor / how often	Beschreibung / Description	Datum/Date	Name
Ha	1x	Variante 004 hinzugefuegt	06.02.09	Vo
G	1x	Variante 003 hinzugefuegt	09.08.04	fv
F	1x	Variante 002 hinzugefuegt	23.01.04	KN
E	1x	Neue Urzeichnung - Daten in Pro/E uebernommen		
		Farbe hinzugefuegt	12.05.03	KN

Aenderungen / Modifications

Format DIN A3 SPEZIALBEFESTIGUNGSSYSTEME WELTWEIT / ENGINEERED FASTENERS WORLDWIDE

Bei Verstaendnisproblemen beantragen Sie bitte beim Absender die deutsche Fassung vor jeder Anwendung.  
"CONDITIONS OF USE"  
This drawing and all information (the "Drawing") disclosed are the exclusive property of A-Raymond. By using this Drawing the Addressee acknowledge and accept that this Drawing (1) is covered by A-Raymond' Intellectual property rights or know-how and (2) is provided under the following conditions who represent a Deposit Agreement. This Drawing is for Addressee' Internal use only limited to its estimation. Without prior written consent of A-Raymond, no permission or rights for any purpose, is hereby granted, such as, without any limitation, (1) the copy, in part or entirely (2) and/or the presentation, in part or entirely, to any other third party outside the Addressee' company or in the company but with no interest (3) and/or the distribution of the Drawing, in part or entirely, in any medium (4) and/or the creation of any derivative work. In case of breach of these conditions, Addressee shall indemnify A-Raymond from and against all damages (compensatory or consequential), costs, expenses and charges, caused or arising out of or attributable to its willful misconduct, fraud, negligence, infringement of A-Raymond' Intellectual Property rights. If the Addressee does not accept these conditions, please notify A-Raymond' sender immediately.

Dateiname/ Filename	CAD-PE: 018610_C_01		
Ersatz fuer/ Substitute for	18610.636 Index 4 vom 30.03.2001	Proj.-Nr./ Proj.-No.	RASCH-Code CAF--
		Vol.(mm <sup>3</sup> ) 1217	Gewicht/ Weight (g) 1.39

Schutzrechte/ Patent rights	vorbehalten / all rights/reserved		
Gepr./ App.	F.-gepr./ Produktion	Q.-gepr./ Quality	S.-gepr./ Patent app.
Maßstab / Scale	Allgem.Tol. wenn nicht anders angegeben/ General tol. unless otherwise specified	Datum/ Date	12.05.2003
2:1	±0.3 / ±2°	Gez./ Drawn	Koehler

Oberflächenbehandlg./ Finish	-	Kennzahl/ Code number	-
------------------------------	---	-----------------------	---

Werkstoffbehandlg./ Material treatment	konditioniert/conditioned Wassergehalt/water content: 1.5% max.	Blechdicke/ Mat.Thickn. DIN EN 10 140	-
--	--	---------------------------------------	---

Werkstoff/ Material	PA 66 Standard	Mat.-Code	2002
---------------------	----------------	-----------	------

Benennung/ Partname  
**Spreizniet / expansion rivet**

Teil-Nr./ Part-No.	<b>018610 000</b>	<b>C</b>
--------------------	-------------------	----------

Ha	Teil-Nr. / Part-No.	Spezial-Farbcod / Special-Colourcode	Oberfläche / Farbe / Finish / colour	Kennzahl / Code number
-	018610 004		hellgrau light grey	GA 4174
G	gewachst mit Klüberwachs	018610 003	schwarz black	SW 7000
F	gewachst mit Klüberwachs	018610 002	mittel-grau 46	GA 4118
	018610 001	(E)	schwarz black	SW 7000
	018610 000	mittel-grau 46	grau grey	GA 4118
	Oberfl.Behandlung/ Finish	Teil-Nr. / Part-No.	Oberfläche / Farbe / Finish / colour	Kennzahl / Code number
	Ausfuehrung / Execution	Spezial-Farbcod / Special-Colourcode	Ausfuehrung / Execution	