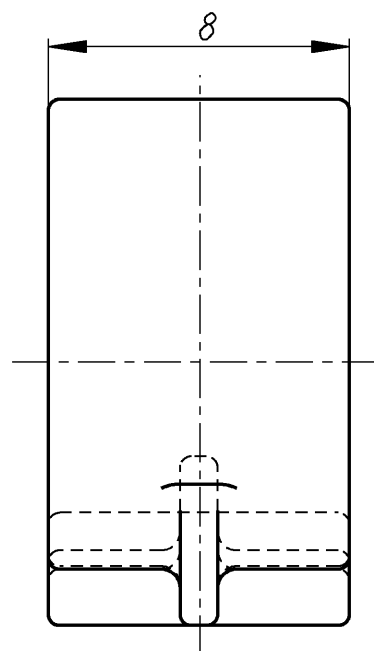
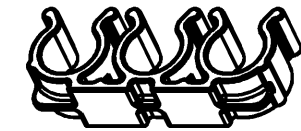


Ansicht / View X





* Masse sind bei eingedrucktem Pruefstift $\varnothing 7,6$ zu messen
 Dimensions must be measured with preassembled gauge plug $\varnothing 7,6$



1:1

passend fuer Rohr - oder Schlauch - $\varnothing 8$
 applicable for pipe - or hose - diameter 8

A		nove cislovani SAP, nový rameček new SAP numbering, new drawing frame	24.03.06	Sd
Ind.	kolikrát / how often	Popis / Description	Datum / Date	Nome
Zmeny / Modifications				
CAD - PE - 175000_002		Format: DIN A3		
				
SPECIALNI UPINACI SYSTEMY				
<small>This drawing and all information (the "Drawing") disclosed are the exclusive property of A. Raymond. By using this Drawing the Addressee acknowledges and accepts that this Drawing (1) is covered by A. Raymond's intellectual property rights or know-how and (2) is provided under the following conditions who represent a Deposit Agreement. This Drawing is for Addressee's internal use only limited to its estimation. Without prior written consent of A. Raymond, no permission or rights for any purpose, is hereby granted, such as, without any limitation, (1) the copy, in part or entirely (2) and/or the presentation, in part or entirely, to any other third party outside the Addressee's company or in the company but with no interest (3) and/or the distribution of the Drawing, in part or entirely, in any medium (4) and/or the creation of any derivative work. In case of breach of these conditions, Addressee shall indemnify A. Raymond from and against all damages (compensatory or consequential), costs, expenses and charges, caused or arising out of or attributable to its willful misconduct, fraud, negligence, infringement of A. Raymond's Intellectual Property rights. If the Addressee does not accept these conditions, please notify A. Raymond's sender immediately. Jestliže máte problém s porozuměním tohoto textu, pak před zahájením práce na tomto projektu kontaktujte odesílatele výkresu za účelem získání vám stoznamitelného překladu.</small>		Datum / Date	7.8.03	
		Kreslil / Drawn	Christl	
		C.-prezk. / App.	397A7CC4043351AE	
		F.-prezk. / App.		
		G.-prezk. / App.		
Patentová práva / Patent rights		vorbehalten / all rights reserved		S.-prezk. / Patent app.
Meritka / Scale	Všeobecné jinak neurčené tolerance / General tol. unless otherwise specified		Nahrada za / Substitute for	
5:1	$\pm 0.5 / \pm 5^\circ$			
Uprava materialu / Material treatment			Hmot. / Weight [g]	
Material			PA 66	
Nazev dilu / Partname			Schlauchhalter hose - clip	
Cis.dilu zakaznika / Customer part No.				
Cislo dilu / Part-No.			175 000.002	
175 000.002			C	
Cislo dilu / Part-No.	Kod mat. / Mat. code	Kod barvy / Colour code	Barva / Colour	
175 000.002	2101	0000	prirodni/natural	

